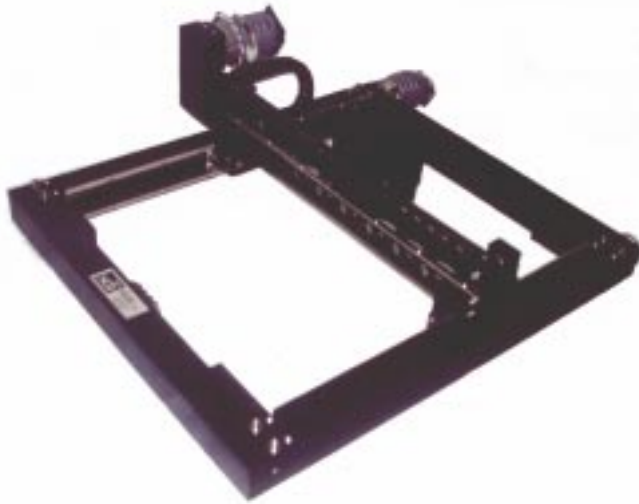


sdi

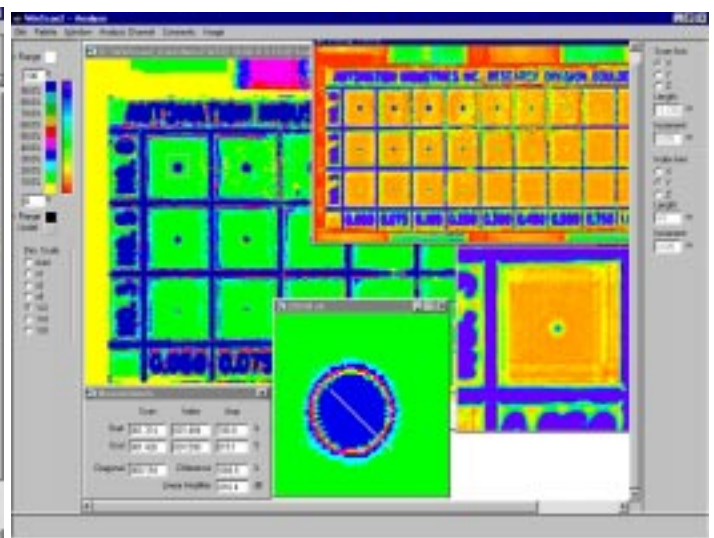
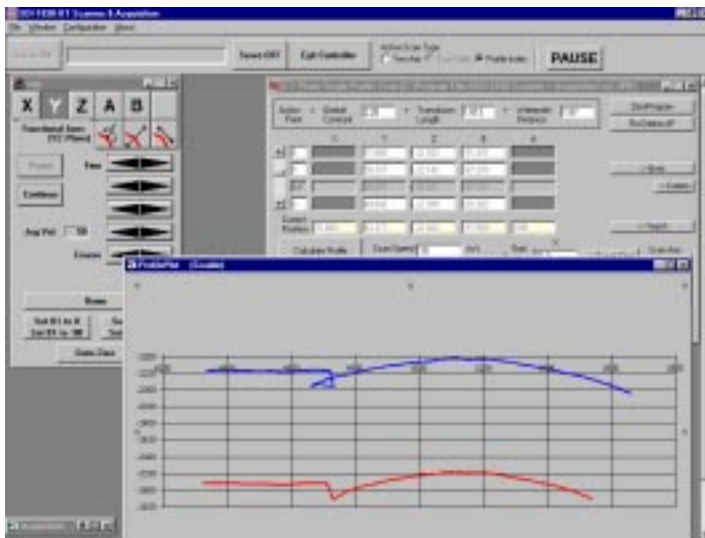
*Structural
Diagnostics, Inc.*

SDI-6100 Series Desk Top Eddy Current Scanners

Specification Subject to Change Without Notice



The SDI-6100 Series EddyScanners are high performance, servo driven PC based systems with the MasterScan motion control and WinScan acquisition and analysis software. Up to eight channel amplitude logging of instrument output is provided at sample rates of 4kHz per channel.. The standard SDI-6105 is a portable frame for use in the field supplied with motorized X and Y. The 6110 is a heavier duty bench top system for precise probe positioning in such applications as turbine component inspection. The range of applications can be extended with the addition of an optional motorized vertical axis, gimbals, turntable and rotator. Advanced configurations can be supplied with fully programmable 3 dimensional contour following.



6100 Series EddyScanners